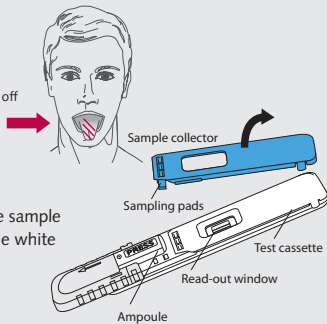


DrugWipe® Saliva Test

Sampling in Saliva

(tongue, oral cavity – shake off any excess saliva)



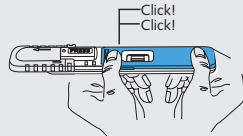
- 1 Remove the blue sample collector from the white test cassette.

- 2 Advise the test person to move his tongue around the bottom of the cheek 3 times. With the sample collector saliva is wiped from the tongue or interior cheek.

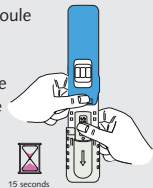


Check sampling pads for colour change from red to yellow. This indicates sufficient saliva collection.

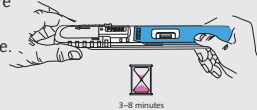
- 3 Place the blue sample collector back onto the white test cassette. Both sampling pads must connect with an audible double click.



- 4 Hold the test cassette vertically, ampoule at the bottom. Squeeze your thumb thoroughly on the word PRESS in order to break the ampoule. Hold the test cassette with the broken ampoule vertically for 10 to 15 seconds.



- 5 Move the cap back into starting position. Lay the test on a horizontal surface and commence timing. Read the test result after 8 minutes. Ignore test results before and after. Do not move the test during that time.



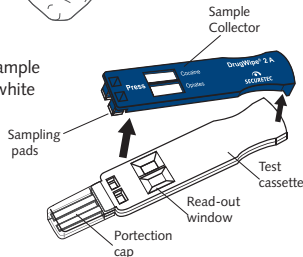
DrugWipe® Test for Sweat and Surfaces

Sampling Sweat

(forehead and neck at the hair line)



- 1 Remove the blue sample collector from the white test cassette.



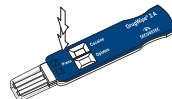
- 2 Wet sampling pads on collector. Shake off any excess water. Do not touch sampling pad.



- 3 Applying slight pressure, wipe surface (e.g. forehead, steering wheel)



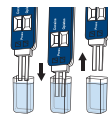
- 4 Replace sample collector onto test cassette. The sample collector must lock in place with an audible double click.



- 5 Remove protection cap and fill to mark with water.



- 6 Dip detection zone gently into filled protection cap for 15 seconds, then remove. **CAUTION: Do not immerse the white plastic body!**



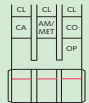
- 7 Place test on a horizontal surface for 10 minutes. Then evaluate test. Ignore results that show before the 10 minutes are complete, or after more than 10 minutes.



Test result

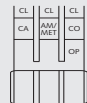
Read out at 10 minutes (5 parameters test)

Tests successful



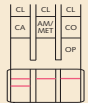
no consumption of drugs
(only red control lines
are visible)

Test failed

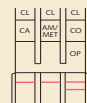


cause: wrong handling or
malfunction of test repeat
with new test

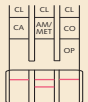
Test successful: positive on drug consumption



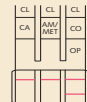
Cannabis



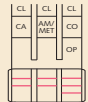
Cocaine



XTC/
Amphetamines



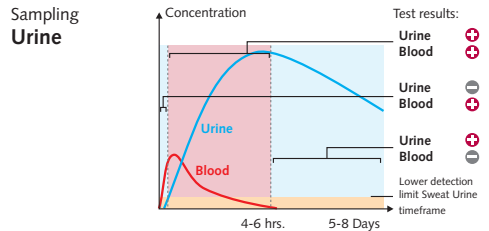
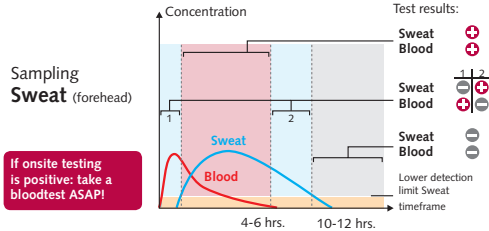
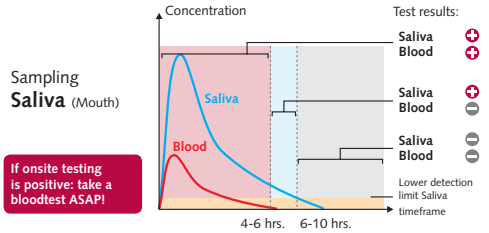
Heroine/Opiates



Cannabis, Cocaine,
XTC/Amphetamines,
Heroine/Opiates

For detailed information
please ask for manual.

Detection window for Cannabis (THC)



Reaction of pupils after consumption

Drug	Size of pupils	Reaction to light
Cannabis	normal to dilated	normal to decelerated (reddened, glossy eyes)
Heroine/Opiates	narrowed	hardly noticeable
Cocaine	dilated	decelerated
XTC/Amphetamines	dilated	decelerated

