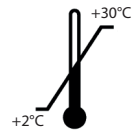


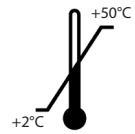
## Storage



**+2 to +30°C** Only store DrugWipe within this temperature range.

Incorrect storage conditions, such as high temperatures or frost, will damage the test.

## Use



**+2 to +50°C** Use DrugWipe within this temperature range.

If using the test in the rain or snow, ensure that DrugWipe 5 S is protected from moisture.

Dispose of used and expired tests with other non-recyclable waste. Please comply with your local regulations for waste disposal.

## Quality Control

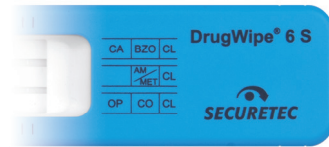
DrugWipe 5 S has an integrated control line (CL). The control line indicates that the test is fully functional and that the screening test has been performed correctly.

Please observe any additional quality control regulations that apply in your institution or establishment.

## Cross Reactions

We have analysed the substances that cross-react with DrugWipe 5 S in our laboratory. We can provide you with information about possible cross reactions on request.

## Other DrugWipe Products



Saliva



Surfaces



Surfaces,  
sweat,  
saliva

For the detection of cannabis, opiates, cocaine, amphetamines/methamphetamines/ecstasy, ketamine and benzodiazepines.



## DrugWipe® 5 S Instructions for Use

### Saliva test for the detection of

- Cannabis
- Opiates
- Cocaine
- Amphetamines/Methamphetamines

Art-No. S 503 G



Securetec Detektions-Systeme AG · Lilienthalstraße 7 · 85579 Neubiberg, Germany  
T +49 89 203080-1651 · F +49 89 203080-1652  
info@securetec.net · www.securetec.net

© 2024 Securetec Detektions-Systeme AG · 70225-EN-v01-2024-06-18

## Intended Purpose

DrugWipe 5 S is intended to be used for the qualitative detection of drugs in human saliva by trained professionals.

The test detects cannabis, opiates, cocaine and amphetamines/methamphetamines (including MDMA/ecstasy). The measurement procedure delivers a preliminary result (screening procedure). Verification of the results is required, in particular if these are positive. Liquid or gas chromatography combined with mass spectrometry (LC/MS, GC/MS) are the preferred broad-spectrum methods.

## Test Principle

DrugWipe 5 S is an immunological quick screening test. The sample collector transfers the sample to the test strips, which contain drug-specific antibodies. If the sample contains drugs, they will bind to the antibodies.

The test starts as soon as you break the integrated glass ampoule and release the liquid. With the help of the liquid, the illegal drugs bound to the antibodies can migrate to the test line. The red test line is evaluated visually.

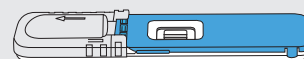
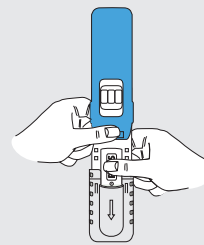
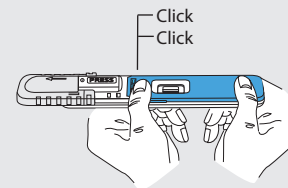
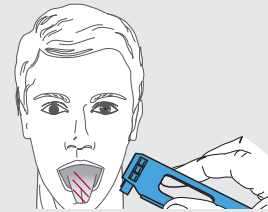
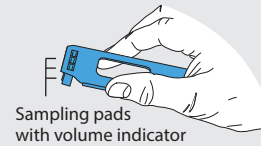
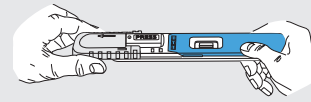
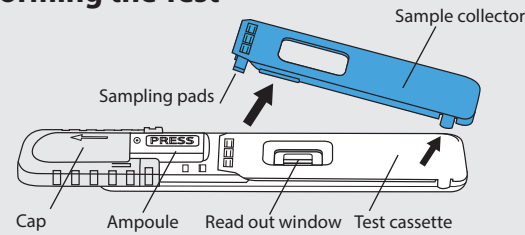
## Package Content

- 1 DrugWipe 5 S saliva test
- 1 package with desiccant

## Read Before Performing the Test

1. DrugWipe 5 S is for single use only.
2. Discard the test if the expiry date has been exceeded.
3. Avoid temperatures in excess of +50°C. Damage to the test may occur.
4. Discard the test if the packaging is damaged, if any moisture has penetrated the packaging, or if a control line has already changed colour to red.
5. Do not open the packaging until shortly before the test is to be used.
6. Saliva is potentially infectious. We recommend that you wear disposable gloves to avoid contact with saliva.

## Performing the Test



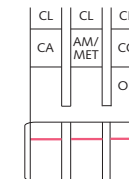
1. Slide the cap in the direction of the arrow until you can read all of the word **PRESS**.
2. Remove the blue sample collector from the white test cassette. **Do not touch the sampling pads.**
3. Ask the person taking the test to run their tongue around the inside of their mouth in a circular motion three times. Then use the sample collector to collect saliva from the tongue or the inside of the cheek.  
If the colour of the sampling pads changes from red to yellow, this indicates that a sample has been successfully collected.
4. Place the sample collector back on the test cassette. **The sample collector must slot into place with an audible double click.**
5. Hold the test cassette vertically with the ampoule at the bottom. **Place your thumb horizontally over the center of the word PRESS and press hard once** until the ampoule breaks. Continue to **hold the test cassette for a further 10 seconds as shown.**
6. Leave the test undisturbed on a horizontal surface. After 3 minutes, read the test result.

## Results Interpretation

- You can read the test result after 3 minutes.
- The result remains valid for up to 180 minutes after the end of the test.
- The test result is to be interpreted as positive even if the test lines only undergo a slight or incomplete colour change.
- Ensure that you have sufficient lighting when evaluating test results, e.g. by using a torch if necessary.

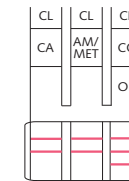
The read out window shows 1 or 2 drug groups and a control line for each test strip. The following abbreviations are used:

CA	Cannabis (THC/Marijuana/Hashish)
AM	Amphetamines
MET	Methamphetamines (MDMA/Ecstasy)
CO	Cocaine (Crack)
OP	Opiates (Heroin/Morphine)
CL	Control Line



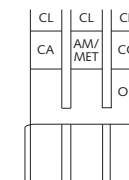
### Negative result = no drugs consumed

All control lines must turn red in order for the test to be valid. The test is negative for those drugs where none of the test lines turn red.



### Positive result = drugs consumed

All control lines must turn red in order for the test to be valid. The test is positive for the drugs for which the test line turns red.



### Invalid result

The test is invalid if one or more control lines do not turn red. Repeat the analysis with a new DrugWipe 5 S test.